

PROMECON

we focus on your process

MECONTROL Air

Your Process Measurement of hot and dusty Air Streams!



- On line Gas- and Air Flow Measurement
- Drift free, maintenance free
- Reliable up to 1100°C

PROMECON GmbH Germany
info@promecon.com
+49 (0) 3 92 03-8 17 30

PROMECON

we focus on your process

MECONTROL Air

Your Process Measurement of hot and dusty Air Streams!

On line Air Flow Sensor



On line Air Flow Sensor installed on a Gas Duct.

Cross Correlation gives you true and accurate Velocity and Flow Measurement. Get rid of maintenance and cleaning problems of conventional delta P methods! Simple Sensor installation and replacement does not require recalibration.

The Sensor delivers on line Measurement of:

- Gas Velocity

Get accurate and drift free Air/Gas Flow in measurement locations not previously possible:

*No dust impact
on your
Flow Measurement !*

*No drift
and
maintenance !*

*Less straight duct
distance necessary for
accurate measurement !*

*Proven in worst
possible combustion
and smelter applications !*

Get "quartz time clock" reliability with your new Air Flow Measurement!

PROMECON GmbH Germany
info@promecon.com
+49 (0) 3 92 03-8 17 30

The **MECONTROL Air** Central Measurement Cabinet Base Station measures and collates data from up to 32 channels.

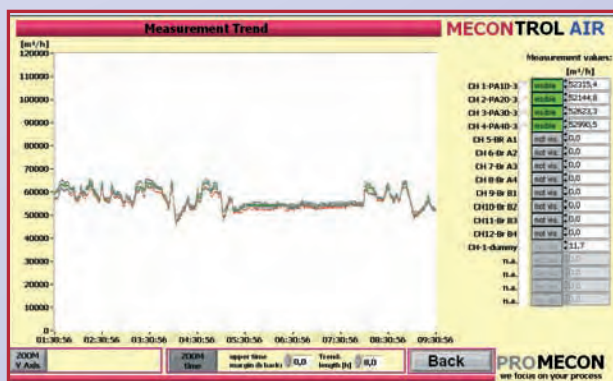
Air

The following capabilities are provided:

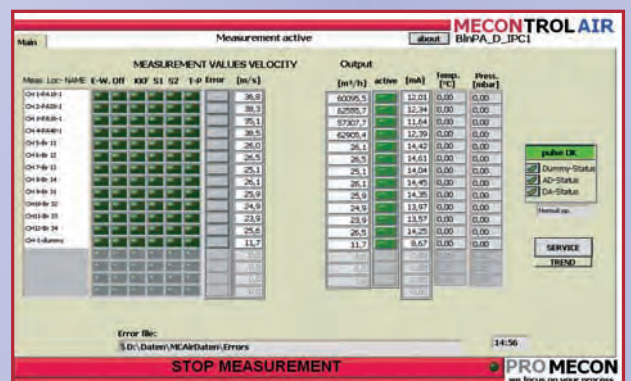
- Full SCADA package (optional)
- Digital as well as Analogue I/O
- Full access via Modem/Internet/Ethernet
- Large Data storage capacity for months of on line data logging
- Inputs available for external signals: temperature, pressure
- Panel IP 65 rated (optional)



MECONTROL Base Station



On line Data MECONTROL Air



Status Screen

MECONTROL

Air

Air Sensor	
Air Measurement:	Cross Correlation
Measurement Cycle:	5 - 7 sec
Measurement Accuracy:	2% (typical), 0.1% repeatability
Measurement Range Velocity:	10 – 40 m/s (32.8 - 131.2 ft/s) standard
Operating Temperature:	10 - 400° C (standard sensor); up to 1100° C (high temperature sensor)
Channels per Cabinet:	4, 8, 16 or 32 (standard)
Sensors per Channel:	2
Redundancy:	possible (IPC, power supplies, I/Os)
Data Communication:	Standard output per channel: 1 x 4 - 20 mA (velocity) Optional input per channel: temperature, pressure Modem, PROFIBUS (other interfaces available upon request)
Error Contacts:	Switching contact (cabinet fault) Fault contact per measurement channel
Protection:	IP 65, NEMA 4
Cabinet	
Protection:	IP 54, NEMA 12
Temperature Range Cabinet:	10 - 45° C
Dimensions:	16 channels: width 600 mm, depth 800 mm, height 1500 mm / 180 kg (397 lbs) 32 channels: width 800 mm, depth 800 mm, height 2100 mm / 220 kg (485 lbs) (other dimensions available)
Maximum Cable length to Sensors:	250 m (820 ft)
Power Supply:	1 x 230 V/110 V (L, N, PE), 50/60 Hz
Modem/Internet Connection:	available
Data collection and export via phone line/Internet possible. Complete remote access and control!	

For further information please contact: PROMECON

Prozess- und Messtechnik Conrads GmbH

Steinfeldstrasse 5 Tel. +49 (0) 3 92 03-8 17 30
D-39179 Barleben Fax +49 (0) 3 92 03-8 17 39
Germany www.promecon.com