

PROMECON

we focus on your process

MECONTROL Coal^{PSA}

Your complete Mill Performance Assessment on line!



- On line Coal Mass Flow Measurement
- On line Velocity Measurement
- On line Particle Size Measurement

PROMECON GmbH Germany
info@promecon.com
+49 (0) 3 92 03-8 17 30

MECONTROL Coal^{PSA}

Your complete Mill Performance Assessment on line!

On line Coal Mass Flow Sensor



On line Coal Mass Flow Sensors installed on a Coal Pipe.

Microwave Resonance, Electrostatic Measurement: Two proven technological solutions combined give you true and trackable Measurement Performance, for your Fuel Distribution Problems.

On line Measurement of:

- Coal Mass Flow
- Coal Velocity
- Coal Concentration

On line Coal Particle Size Sensor



New Laser based Particle Size Analysis Sensor installed on a Coal Pipe.

Laser Velocimetry Technique provides fast and reliable Measurement Results. 10 000 Particles are counted each second for accurate statistical Measurement of the Grinding Process.

On line Measurement of:

- Particle Size Distribution
- Particle Velocity Distribution

Get deep insight into your Grinding Process and find the answers you always wanted to know:

Does your Mill have the right Size Distribution, Flow Distribution, Coal Velocities ?

What is the Response Time of your Mill to Load Changes ?

How does Coal Type and Roller Pressure affect your Grinding ?

Are your Classifier and PA settings o.k. ?

Get the answers dynamically on line – available as permanent or mobile System!

PROMECON

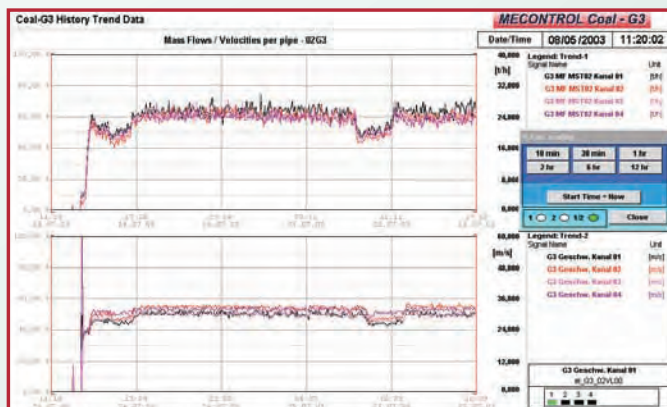
we focus on your process

The **MECONTROL Coal^{PSA}** Central Measurement Base Station controls all Sensors and collates data.

Coal^{PSA}

The following capabilities are provided:

- Full SCADA package (optional)
- Digital as well as Analogue I/O
- Full access via Modem/Internet/Ethernet
- Large Data storage capacity for months of on line data logging
- Inputs available for external signals (Such as Mill Feeder, Roller Pressure etc.)
- Derived data analysis on line, in real time (Mill Dynamics, Moisture Content of Coal)
- Industrialised Laptop as central computer for maximum flexibility
- Panel IP 54 Rated



On line Data Coal Flow



On line Data Particle Size Distribution

MECONTROL

Coal^{PSA}

	Coal Sensor	PSA Sensor
Number of Channels:	4 (standard) up to 8 (add on option)	1 (standard) up to 2 (add on option)
Measurement Range:	Concentration: 50 g/m ³ – 10.000 g/m ³ Mass Flow: 0 t/h - 100 t/h Velocity: 10 m/s – 60 m/s	Particle Size 30 - 6000 µm, Velocity 0.01 - 50 m/s
Materials:	Ceramic Sinter Probe - long life	Ceramic Sinter Probe, Sapphire, Epoxy Resin Optics
Data Rate:	2 - 4 seconds	Up to 10 000 Particles per second, dependent on Process Conditions
Max Operating Pressure:	4 bar	4 bar
Operating Temperature:	0 - 150°C 0 - 110°C on housing	-20 - 130°C at measuring point, -10 - 60°C on housing
Dimensions:	Antenna Length: 50, 70, 90 or 120 mm	Tube length = 280 mm, Tube diameter = 25 mm
Air Supply:		adjustable Air Flow Meters, Pulse Flow with adjustable timer
Protection:	IP 54, NEMA 12 (IP 65, NEMA 4 and ATEX upon request)	IP 65, NEMA 4 (ATEX upon request)
Cabinet		
Protection:	IP 54, NEMA 12 (IP 65, NEMA 4, upon request)	
Temperature Range Cabinet:	0 - 55°C	
Dimensions:	width 600 mm, depth 500 mm, height 1400 mm / 140 kg (309 lbs)	
Maximum Cable length to Sensors:	50 m to Coal Sensor and 100 m to PSA Sensor	
Power Supply:	1 x 230 V/110 V (L, N, PE), 50/60 Hz	
Modem/Internet Connection:	available	
Data collection and export via phone line/Internet possible. Complete remote access and control!		

For further information please contact: PROMECON

Prozess- und Messtechnik Conrads GmbH

Steinfeldstrasse 5 Tel. + 49(0)3 92 03 -8 17 30
D-39179 Barleben Fax + 49(0)3 92 03 -8 17 39
Germany www.promecon.com